

2016
BREWERS
GUILD OF NEW ZEALAND
AWARDS



BOUGHT TO YOU BY
M **CRYER MALT**



CATALOGUE

OF RESULTS 2016



WWW.BREWERSGUILD.ORG.NZ

'LOCAL MALT FOR LOCAL BEER'



PH 0800 625 833



CRYERMALT.CO.NZ

CRYER MALT

ONLY THE FINEST MALT AND BREWING INGREDIENTS.

MALTINGS ARE LOCATED IN MARTON

Malteurop NZ sources malting barley from four main regions and has its malting plant in Marton.

MARTON GROWER

Arable Solutions grows malting barley in the Rangitikei region near Marton.

HAWKE'S BAY GROWER

Ludlow Farm is a grower in Otane in the Hawke's Bay.

WAIRARAPA GROWER

The Reynolds brothers' farm near Masterton has been in the family since 1865.

CANTERBURY GROWER

Marr Farms in Methven grow trial breeds and established malting barley varieties.



**WEYERMANN®
SPECIALITY MALTS**
Bamberg Germany



**BAIRDS MALTING &
THOMAS FAWCETT MALTSTERS**
United Kingdom

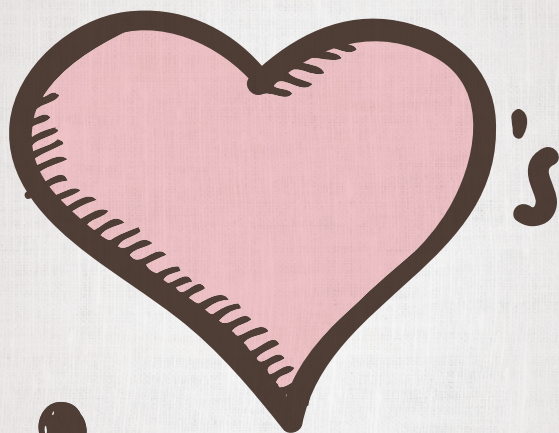


**BARRETT BURSTON
MALTING**
Australia



CRYER MALT

dish



beer

The magazine backing NZ's craft beer industry

Get your copy for the latest craft beer news and beer and food matches.

www.dish.co.nz



CONTENTS

CHAIRPERSON'S REPORT	2 - 5
RESULTS	
Champion New Zealand Brewery	7
Champion New Zealand Manufacturer	9
Champion International Brewery	9
International Lager	11
New Zealand Lager	12
British Ale	13
European Ale	14
US Ale	15
Pale Ale	16 - 17
Strong Pale Ale	18 - 19
Stout & Porter	20
Wheat & Other Grain	21
Flavoured & Aged (incl. Fruit/Spice/Herb/ Honey/Smoke)	22
Specialty, Experimental, Aged, Barrel & Wood-Aged	23-24
Cider or Perry	25
Fruit or Flavoured Cider or Perry	26
Packaging	27
Morton Coutts Trophy	28
Brewers Guild of New Zealand Beer Writer of the Year	28
Honours	30
Awards Summary	32 - 33



CHAIRPERSON'S REPORT 2015/16

ANNUAL REPORT

As we prepare to celebrate the Brewer's Guild of New Zealand awards for the 10th time there is much to celebrate.

There are many signs that beer in New Zealand is in fine health and it is a wonderful time to be part of our industry. Beer is front and centre in media and towns and cities around NZ see value in promoting their brewing industry for both tourism and economic growth. From our smallest members to our largest we are seeing significant investment into new brewing facilities and outlets to further promote beer in all its glory.

Looking back over the years we have eight deserving recipients of the Champion Brewery Award since it was first offered in 2008. In a testament to the high standard of entries received and the rigorous judging process no brewery has yet been crowned Champion more than once and the award has been won by the largest and some of the very smallest brewing companies in New Zealand.

Still on the awards, this is the 10th consecutive year the Guild has achieved a record number of entries into the awards and membership of the Guild is also at an all-time high. We continue to receive overwhelming support from new and returning sponsors and we are thrilled this year to welcome Cryermalt as Principal Sponsor for 2016.

HIGHLIGHTS

Some of the key achievements of the Guild over the last 12 months include;

- **Education:** A large number of initiatives have been rolled out including comprehensive Health & Safety training accessed by over a quarter of Guild members, guidelines for labelling and selling beer online and Food Safety programme courses.
- **Keg Amnesty:** Over 3,000 kegs have been repatriated in the first year of the amnesty and we continue to work on providing an easy way to return foreign kegs to their home breweries.
- **Advocacy:** The Guild has continued to advocate for our members, including making submissions on the Auckland LAP, Gluten Free labelling, Customs & Excise Act Review and the Sale & Supply of Liquor act.
- **Awards/Conference:** At the end of last year the Awards were held in Auckland for the first time, and while we are returning to the City of Sails for a second year we have successfully tested the concept of moving the awards and are excited about what this means for the future.



CHAIRPERSON'S REPORT 2015/16

CHALLENGES

Along with the highlights from the last year there have been some significant challenges facing the Guild. A recurring theme in past annual reports is the heavy reliance that the Guild places on volunteer members of the Exec that donate their time for the benefit of the organisation. This has again been a challenge to manage this year and as we take on more projects the demand on volunteers continues to grow. Your exec works hard to deliver value and I encourage all members to consider ways that they can contribute to the continued success of the Guild. On that note, nominations are now open for the Executive Committee and there are a number of vacancies to fill. It is a great way to make a difference and to get to know the industry from a different perspective.

This year saw the resignations of Jenny Cameron and Chris Mills from the Exec. Jenny in particular was an exceptional resource for the Guild, leveraging her position with the Brewers Association and her legal background to assist with regulatory and legislative submissions and advice. Her contribution has been sorely missed. We thank Jenny and Chris for their efforts and wish them all the best.

Lastly, early this year our Executive Officer Phillippa Boa joined the world of small business owners and started her own venture, the Lincoln Pantry. Phillippa was the driving force behind the Guild for a number of years and the annual showpiece that is the Brewers Guild Awards is largely down to Phillippa's vision and hard work. The process of finding a replacement presented its own challenges and throughout this year Phillippa has continued to give her precious time to the Guild to ensure the continuation of business as usual, and more recently to help bring our Awards Project Manager Cathrine van Venrooy up to speed. Thank you Phillippa for your efforts and all the best in your new venture.



CHAIRPERSON'S REPORT 2015/16

THE FUTURE – 2017 AND BEYOND

Taking into account the continued growth in the number and diversity of Guild members and the challenges identified above, the committee believes it is timely review the current structure and governance of the Guild.

Initially work commenced on looking at changes to structure stemming from a commitment made at the 2015 AGM to consider regional 'sub-committees' such as a 'Canterbury Brewer's Association'. In considering this it was determined that the Guild is still too immature as an organisation and that governance and operations needed to be reviewed and separated more effectively before any decentralisation could be responsibly undertaken. Sustainability of the organisation is key and no full review of the Guild has taken place since the original incorporation in 2006, yet the Guild is a vastly different organisation a decade on. With the changes to key people in the current year this review was unable to be undertaken.

It is now planned to convene a sub-committee to assist with this review and make recommendations to the Guild on structure, membership tiers/classes, fee structure and how aspirational the Guild can be looking forward. It is intended that the sub-committee will be made up of former Guild Exec members, the sitting President and Chair and professional advisors as required. The challenge to this group will be to consider the original aims of the Guild, the current needs of the membership and the future requirements for the Guild to best serve the brewing industry. It is intended that recommendations will be made in the first half of the next year for feedback and consultation with members as required.

This is an exciting opportunity for the Guild to set up for the next decade of service to our members and I encourage you all to consider the feedback you would like to give when asked.



CHAIRPERSON'S REPORT 2015/16

THANK YOU'S

As always, there are a number of public acknowledgements to make and many others deserving of thanks that we don't have the room to list!

Special mentions to

- Our generous and passionate sponsors who unfailingly support the Guild to continue to deliver value to our industry. We truly couldn't do it without your help.
- Craig Bowen and team (judges, stewards, helpers) who tirelessly works every year to deliver a world class beer awards that brings enormous credit to the Guild and the NZ beer industry.
- Lu & Dean from CMNZL. Extraordinary event organisers and conference managers.
- Cathrine van Venrooy. Organisational genius and project manager for the Awards. Cathrine has been hugely instrumental in keeping the Guild going strong in the lead up to the awards.
- Phillipa Boa. As above Phillipa has given years of service to the Guild and continues to give up her precious time as required to assist.
- Former Exec members for their advice and counsel. Special mention to Craig Bowen, David Cryer and Ralph Bungard for their assistance and obvious passion for the Guild

Finally, a huge thank you to the current Guild Exec committee, Emma McCashin, Matt Stevens, Richard Crowe, Ava Wilson, Lucie Campbell and Alan Spinks. Your continued commitment to the Guild is appreciated and I look forward to celebrating with you and all our members at the upcoming Guild Conference Events and Awards.

Jonathan Alve
Chairman



OUR NEW
MALT IS
SUPERNOVA

www.gladfieldmalt.co.nz





RESULTS

Champion New Zealand Brewery

Sponsored by Gladfield Malt

Trophy: Tuatara Brewing Company





BREWERS
GUILD OF NEW ZEALAND

The
Champion
of New Zealand's
Proud & Innovative
Beer Industry

AWARDING CHAMPIONS

INFLUENCING POLICY

PROVIDING KNOWLEDGE



BREWERSGUILD.ORG.NZ



RESULTS

Champion New Zealand Manufacturer

Sponsored by Enpac



Trophy: Steam Brewing

Champion International Brewery

Sponsored by NZ Hops



Trophy: Boston Beer Company

AWARD WINNING BEER & CIDER

DESERVES...

AWARD WINNING PACKAGING & LABELLING



2016
Gold
Award
Winner

2016
Gold
Award
Winner

2016
Gold
Award
Winner

2016
Gold
Award
Winner

 Find us on Facebook
p. 04 499 0912 e. info@exceldp.co.nz

excel
DIGITAL



International Lager

Sponsored by O-I



Trophy	DB Breweries	Heineken Light
Gold	DB Breweries	Heineken Light
Gold	Eddylines Brewery & Pizzeria	Jolly Roger Black Lager
Silver	Boundary Road Brewery	Thomas Edison
Silver	Boundary Road Brewery	Haagen Lager
Silver	DB Breweries	Monteith's Black Beer
Silver	Emerson's Brewing Co.	Emerson's Vertumnus
Silver	Hawkes Bay Brewing Co.	Pilsner
Silver	Lion	Mac's Spring Tide
Silver	Lion	Becks
Silver	Lion	Mac's Hop Rocker
Silver	Lion	Stella Artois
Silver	The Galbraith Brewing Co.	Munich Lager
Silver	The Galbraith Brewing Co.	Pilsner, Czech Style
Silver	The Sawmill Brewery	Sawmill Schwarzbier
Silver	Tuatara Brewing Co.	Helluva Lager
Silver	West End	Hahn Super Dry
Silver	Wigram Brewing Co. Ltd.	Munchner Dunkel
Bronze	Black Dog	Munchen
Bronze	Boston Beer Company	Samuel Adams Sam Light
Bronze	Boston Beer Company	Samuel Adams Octoberfest
Bronze	Boundary Road Brewery	The Chosen One
Bronze	Castlemaine Perkins	XXXX Summer Bright
Bronze	Dale's Brewing Co. Ltd.	Doppelbock
Bronze	Eddylines Brewery & Pizzeria	Kaiteriteri Gold Pilsner
Bronze	Garage Project	Hatsukoi
Bronze	Harrington's Breweries	Ngahere Gold
Bronze	Hawkers	Hawkers Pilsner
Bronze	J. Boag & Son	James Boag's Premium Lager
Bronze	J. Boag & Son	James Boag's XXX
Bronze	J. Boag & Son	James Boag's Draught
Bronze	Kereru Brewing Company	Maidstone Lager
Bronze	Privatbrauerei Waldhaus	Waldhaus Sommer Bier
Bronze	Privatbrauerei Waldhaus	Waldhaus Spezial Gold
Bronze	Sprig & Fern Brewery	Doppelbock
Bronze	Sweat Shop Brew Kitchen	Pilsner
Bronze	Three Boys Brewery	Three Boys Lager
Bronze	Tooheys	Tooheys New
Bronze	Zeelandt Brewery	Zeelandt Brewery Schwarzbier



New Zealand Lager

Sponsored by Cryermalt

Trophy	Tuatara Brewing Co.	Mot Eureka
Gold	Tuatara Brewing Co.	Mot Eureka
Gold	Behemoth Brewing Company	Hopped up on Pils
Gold	Liberty Brewing Company	Halo
Gold	Lion	Mac's Gold
Silver	Boundary Road Brewery	Wild Buck
Silver	DB Breweries	Tui EIPA
Silver	Eagle Brewing NZ	Pilsner
Silver	Emerson's Brewing Co.	Emerson's Pilsner
Silver	Garage Project	Hakituri
Silver	Harrington's Breweries	East Indies
Silver	Hawkes Bay Brewing Co.	Classic Ale
Silver	Lion	Speight's Mid Ale
Silver	Lion	Lion Red
Silver	Lion	Lion Brown
Silver	Panhead Custom Ales	Port Road Pilsner
Silver	ParrotDog	Pandemonium
Silver	Sprig & Fern Brewery	Pilsner
Silver	The Sawmill Brewery	Sawmill Pilsner
Silver	West End	West End Draught
Bronze	Altitude Brewing	The Powder Day
Bronze	Croucher Brewing	Pilsner
Bronze	Eddyline Brewery & Pizzeria	Tahunanui Light Pilsner
Bronze	Founders Brewery	1946 Pilsner
Bronze	Ghost Brewing Co.	Ghost's Dux Lager
Bronze	Harrington's Breweries	Rogue Hop
Bronze	HorseBox	Ronin Pilsner
Bronze	Kereru Brewing Company	Big Pigeon Pilsner
Bronze	Lakeman Brewing Co.	Pilsner
Bronze	Lion	Speight's Summit Lager
Bronze	Lion	Waikato Draught
Bronze	North End Brewery Ltd.	North End Pilsner
Bronze	Sprig & Fern Brewery	SX Pilsner
Bronze	The Laboratory	Galileo's Golden Lager
Bronze	Townshend Brewery	Oldhams Tap
Bronze	Wigram Brewing Co. Ltd.	Bavarian Pilsner



British Ale

Sponsored by Brewers Guild of New Zealand



Trophy	Sprig & Fern Brewery	Best Bitter
Gold	Sprig & Fern Brewery	Best Bitter
Gold	Epic Brewing Company	Epic The Observer
Silver	Epic Brewing Company	Epic 10 Year Celebration Ale
Silver	Fork Brewing	Mallon Colin & The Infinite Gladness
Silver	Lion	Speight's Distinction Ale
Silver	Lion	Speight's 5 Malt Old Dark
Silver	Lion	Speight's Shepherds' Delight
Silver	mike's Brewery	mike's Loch 'n Lode
Silver	Renaissance Brewing Ltd.	Tribute
Silver	Schipper's Brewing Company	Scallwag Amber Ale
Silver	Townshend Brewery	Last of the Summer Ale
Bronze	Boston Beer Company	Samuel Adams Irish Red
Bronze	DB Breweries	Monteith's Mid
Bronze	Emerson's Brewing Co.	Emerson's Bookbinder
Bronze	J. Boag & Son	James Boag's Wizard Smith's Ale
Bronze	Kereru Brewing Company	Fresh Hop Special Bitter
Bronze	King Country Brewing Company	King Country Pale Ale
Bronze	McLeod's Brewery	Trader's
Bronze	Renaissance Brewing Ltd.	Stonecutter
Bronze	Sprig & Fern Brewery	ESB
Bronze	Tuatara Brewing Co.	Iti
Bronze	Weezledog	DickleDoi
Bronze	Wigram Brewing Co. Ltd.	Wee Reeky



European Ale

Sponsored by BeerNZ



Trophy	Moa Brewing Company	Moa St Josephs
Gold	Moa Brewing Company	Moa St Josephs
Gold	North End Brewery Ltd.	Rustica
Silver	8 Wired Brewing	Saison Sauvín
Silver	Aotearoa Breweries	Mata BOP
Silver	Boston Beer Company	Samuel Adams Stony Brook Red
Silver	Boston Beer Company	Samuel Adams Tetravis
Silver	Brave Brewing Co.	Farmhouse Ale
Silver	Concept Brewing	Gratzer
Silver	Fork Brewing	Puns 'n' Goses
Silver	Fork Brewing	Sourbet
Silver	Garage Project	Brightside
Silver	Garage Project	Biere De Garage
Silver	Kereru Brewing Company	Velvet Boot
Silver	Moa Brewing Company	Moa Cherry Sour 2014 Vintage
Silver	Panhead Custom Ales	Greasy Monk
Bronze	Black Dog	Malinois
Bronze	Boston Beer Company	Samuel Adams New World Tripel
Bronze	Choice Bros	Strung Out On Lasers
Bronze	Craftwork Brewery	Red Bonnet Original
Bronze	Deep Creek Brewing Company	Steamfunk Tequila Kiwifruit Gose
Bronze	Emerson's Brewing Co.	Emerson's Dinner Bell
Bronze	Ferris Road Brewery	Waldhaus Ohne Filter
Bronze	Garage Project	Tournesol
Bronze	Good George Brewing	Good George Saison
Bronze	Good George Brewing	Good George Gose
Bronze	Hawkers	Hawkers Saison
Bronze	Moa Brewing Company	Moa Sour Grapes 2015
Bronze	Moa Brewing Company	Moa Sour Blanc
Bronze	Sunshine Brewery Ltd.	Grand Cru
Bronze	The Sawmill Brewery	Sawmill Christmas Ale 2016
Bronze	Townshend Brewery	666



US Ale

Sponsored by AIBA



Trophy	8 Wired Brewing	Tall Poppy
Gold	8 Wired Brewing	Tall Poppy
Gold	Black Dog	Carrot Top
Silver	8 Wired Brewing	Hippy Berliner
Silver	Black Dog	Golden Lab
Silver	Hot Water Brewing Co.	Barley Wine 2014
Silver	Liberty Brewing Company	Yakima Scarlet
Silver	Lion	Mac's Sassy Red
Silver	Rocky Knob Brewing Co.	Code Brown
Silver	Steam Brewing	Resolution
Silver	Tuatara Brewing Co.	London Porter
Bronze	Baylands Brewery	Enforcer
Bronze	Beer Baroness Brewing Company	Lady Danger
Bronze	Behemoth Brewing Company	Sharp Black IPA
Bronze	Black Sands	Pacific Red Ale
Bronze	Brave Brewing Co.	American Brown Ale
Bronze	Emerson's Brewing Co.	Emerson's Whitetail
Bronze	Fork Brewing	Base Isolator
Bronze	Garage Project	Hellbender
Bronze	Good George Brewing	Good George Black IPA
Bronze	Harrington's Breweries	Harrington's Black IPA
Bronze	Hot Water Brewing Co.	Golden Steamer Ale
Bronze	Liberty Brewing Company	Alpha Obsidian
Bronze	Moa Brewing Company	Moa Festive Red
Bronze	Panhead Custom Ales	Johnny Octane
Bronze	ParrotDog	Bloodhound
Bronze	Rocky Knob Brewing Co.	Oceanside Amber Ale
Bronze	Southpaw Brewing Company	Riding Pine
Bronze	The Galbraith Brewing Co.	Pale Ale, New American Style
Bronze	Three Boys Brewery	Three Boys West Coast Red IPA
Bronze	Townshend Brewery	Sutton Hoo
Bronze	Tuatara Brewing Co.	Tu-Rye-Ay



Pale Ale

Sponsored by Weyermann



Trophy Tuatara Brewing Co.

- Gold Tuatara Brewing Co.
- Gold 8 Wired Brewing
- Gold Croucher Brewing
- Gold Tuatara Brewing Co.
- Silver Bach Brewing
- Silver Black Sands
- Silver Brave Brewing Co.
- Silver Brave Brewing Co.
- Silver Eddyline Brewery & Pizzeria
- Silver Good George Brewing
- Silver Hop Federation Brewery
- Silver Lakeman Brewing Co.
- Silver Liberty Brewing Company
- Silver Liberty Brewing Company
- Silver Moa Brewing Company
- Silver Panhead Custom Ales
- Silver ParrotDog
- Silver Tooheys
- Silver Townshend Brewery
- Silver Tuatara Brewing Co.
- Bronze 8 Wired Brewing
- Bronze Altitude Brewing
- Bronze B.Effect Brewing Co.
- Bronze Baylands Brewery
- Bronze Behemoth Brewing Company
- Bronze Birkenhead Brewing Company
- Bronze Black Dog
- Bronze Black Sands
- Bronze Brave Brewing Co.
- Bronze Cassels and Sons Brewery
- Bronze DB Breweries
- Bronze Eagle Brewing NZ
- Bronze Eddyline Brewery & Pizzeria
- Bronze Fork Brewing
- Bronze Fork Brewing
- Bronze Fork Brewing
- Bronze Funk Estate
- Bronze Funk Estate

Sauvinova

- Sauvinova
- Tropidelic Pale Ale
- Croucher Pale Ale
- American Pale Ale
- Driftwood Pacific Pale Ale
- New Zealand Pale Ale
- Extra Pale Ale
- NZ Pale Ale
- Pozzy Pale Ale
- Good George IPA
- Pale Ale
- Taupo Pale Ale
- Oh Brother
- Elixir
- Moa Temperance
- Quickchange XPA
- DeadCanary
- James Squire 150 Lashes Pale Ale
- Half Guard
- Kapai
- Semiconductor
- The Posturing Professional
- Cut Cat
- 450XPA
- Chur! NZ Pale Ale
- BBC Pacific Pale Ale
- Chomp
- American Pale Ale
- Eastern Glow
- Pale Ale
- Monteith's Pointers Pale Ale
- South Island Pale Ale
- Hop-Rider Pale Ale
- Low Blow
- Base Jumper
- Godzone Beat
- Rock Steady
- Oh Lordy Pale Ale



Pale Ale

Sponsored by Weyermann



Bronze	Garage Project	Hapi Daze
Bronze	Good George Brewing	Good George APA
Bronze	Harrington's Breweries	Traveller
Bronze	Kereru Brewing Company	Yellowhead
Bronze	King Country Brewing Company	King Country Special Pale Ale
Bronze	Lakeman Brewing Co.	Pale Ale
Bronze	Lion	Mac's Three Wolves
Bronze	Martinborough Brewery	Ohio APA
Bronze	McLeod's Brewery	Paradise Pale Ale
Bronze	Mount Brewing Co.	India Pale Ale
Bronze	Panhead Custom Ales	Supercharger
Bronze	Pirate Life Brewing	HopCo x Pirate Life NZ Pale Ale
Bronze	Pirate Life Brewing	Pirate Life Pale Ale
Bronze	Pirate Life Brewing	Throwback IPA
Bronze	Sprig & Fern Brewery	White IPA
Bronze	Three Boys Brewery	Three Boys Bright Ale
Bronze	Townshend Brewery	North South APA
Bronze	Weezledog	Easy Weezy
Bronze	West End	James Squire Hop Thief 8 American



Strong Pale Ale

Sponsored by Red Kegs



Trophy	Epic Brewing Company	Epic Armageddon IPA
Gold	Epic Brewing Company	Epic Armageddon IPA
Gold	Black Dog	Special Agent
Gold	Garage Project	Dirty Boots
Silver	8 Wired Brewing	Hopwired IPA
Silver	Altitude Brewing	The Mischievous Kea
Silver	Bach Brewing	Kingtide Pacific IPA
Silver	Bach Brewing	Tailfin American IPA
Silver	Behemoth Brewing Company	'Murica APA
Silver	Black Dog	Dog Father
Silver	Choice Bros	I'm Afraid of Americans
Silver	Croucher Brewing	ANZUS IPA
Silver	Emerson's Brewing Co.	Emerson's Bird Dog
Silver	Epic Brewing Company	Epic Lupulingus
Silver	Garage Project	Pernicious Weed
Silver	Garage Project	Garagista
Silver	Garage Project	Wolfman
Silver	Kereru Brewing Company	Resonator IPA
Silver	ParrotDog	K?whai
Silver	Pirate Life Brewing	Pirate Life IIPA
Silver	Tuatara Brewing Co.	Nui
Silver	Tuatara Brewing Co.	Double Trouble
Bronze	8 Wired Brewing	Superconductor
Bronze	B.Effect Brewing Co.	Hop'n Roll APA American Pale Ale
Bronze	Beer Baroness Brewing Company	The First Lady
Bronze	Behemoth Brewing Company	In Ya Face Double IPA
Bronze	Boundary Road Brewery	Mumbo Jumbo
Bronze	Brave Brewing Co.	Sunny Side Up
Bronze	Brave Brewing Co.	Tigermilk
Bronze	Brew Moon Brewing Company	Hophead IPA
Bronze	Emerson's Brewing Co.	Emerson's Grapefruit IIPA
Bronze	Emerson's Brewing Co.	Emerson's Explosive IPA
Bronze	Epic Brewing Company	Epic Thor
Bronze	Garage Project	Los Lobos
Bronze	Garage Project	Angry Peaches
Bronze	Garage Project	Death From Above
Bronze	Garage Project	Party and Bullshit



Strong Pale Ale

Sponsored by Red Kegs



Bronze	Hawkers
Bronze	Liberty Brewing Company
Bronze	Liberty Brewing Company
Bronze	Liberty Brewing Company
Bronze	Lion
Bronze	McLeod's Brewery
Bronze	Panhead Custom Ales
Bronze	ParrotDog
Bronze	ParrotDog
Bronze	Rocky Knob Brewing Co.
Bronze	The Sawmill Brewery
Bronze	Townshend Brewery
Bronze	Weezledog
Bronze	Wigram Brewing Co. Ltd.

Hawkers IPA
Knife Party
Yakima Monster
Sauvin Bomb
Mac's Birthday Suit
Tropical Cyclone
The Vandal
Wood Rose
Forget-me-not
Rock Lobster
Sawmill India Pale Ale
Blitzgreig
Hopster
Mustang Pale Ale



Stout & Porter



Sponsored by Kegstar

Trophy	Emerson's Brewing Co.	Emerson's Phantom Lord
Gold	Emerson's Brewing Co.	Emerson's Phantom Lord
Gold	8 Wired Brewing	iStout
Gold	Cassels and Sons Brewery	Milk Stout
Silver	8 Wired Brewing	The Big Smoke
Silver	DB Breweries	Monteith's Velvet Stout
Silver	Eagle Brewing NZ	Coalface
Silver	Kereru Brewing Company	Imperial Moonless Stout
Silver	Martinborough Brewery	Imperial Stout
Silver	North End Brewery Ltd.	Iron Sands Oat Rye Stout
Silver	Sparks Brewing	Outlander
Silver	Sunshine Brewery Ltd.	Robust Porter
Silver	Wigram Brewing Co. Ltd.	Smokey Porter
Bronze	Boston Beer Company	Samuel Adams Cream Stout
Bronze	Brew Moon Brewing Company	Dark Side of the Moon
Bronze	BrewStation	BrewStation Fear of the Dark
Bronze	DB Breweries	Monteith's Barrel Aged Porter
Bronze	Deep Creek Brewing Company	Nero Series Imperial Stout
Bronze	Eddyline Brewery & Pizzeria	Roaring 40's Porter
Bronze	Fork Brewing	Parallel Importer
Bronze	Fork Brewing	Murder of Crows
Bronze	Garage Project	Cabbages and Kings
Bronze	Garage Project	Baltic Porter
Bronze	Ghost Brewing Co.	Ghost's Dux Black Shag
Bronze	Hawkers	Hawkers Imperial Stout 2016
Bronze	Kainui Brew Co.	American Porter
Bronze	Lakeman Brewing Co.	Black Jack Stout
Bronze	Liberty Brewing Company	Darkest Days
Bronze	Lion	Speight's Porter
Bronze	McLeod's Brewery	Pioneer
Bronze	McLeod's Brewery	Billycan
Bronze	mike's Brewery	mike's Chocolate Milk Stout
Bronze	Panhead Custom Ales	Blacktop
Bronze	Sunshine Brewery Ltd.	Black Magic Stout
Bronze	Sweat Shop Brew Kitchen	Oatmeal Stout
Bronze	Te Aro Brewing Company	Te Aro Oatmeal Stout
Bronze	Three Boys Brewery	Three Boys Porter
Bronze	Three Boys Brewery	Three Boys Oyster Stout
Bronze	West End	Southwark Old Stout



Wheat & Other Grain

Sponsored by Beer & Brewer Magazine



Trophy Tuatara Brewing Co.

Gold	Tuatara Brewing Co.
Gold	Brave Brewing Co.
Silver	Altitude Brewing
Silver	Privatbrauerei Waldhaus
Bronze	Fork Brewing
Bronze	Lion
Bronze	Three Boys Brewery
Bronze	Wigram Brewing Co. Ltd.

Weiz Guy

Weiz Guy
Pacific Wheat Ale
The Persistent High
Waldhaus Schwarzwald Weisse
Stormchaser
Mac's Great White
Three Boys Wheat
Crazy Mountain Rye



Flavoured & Aged (incl. Fruit/ Spice/ Herb/ Honey/ Smoke)



Sponsored by Excel Digital

Trophy	Choice Bros	Reet Petite
Gold	Choice Bros	Reet Petite
Gold	Fork Brewing	Tainted Love
Gold	Garage Project	Dark Arts
Silver	Behemoth Brewing Company	Triple Chocolate Milk Stout
Silver	Black Dog	Smoke Bomb
Silver	Eddyline Brewery & Pizzeria	Eddyline Java Stout
Silver	Emerson's Brewing Co.	Emerson's Fortification - Vanilla
Silver	Emerson's Brewing Co.	Emerson's Manuka Smoked Chili Porter
Silver	Emerson's Brewing Co.	Emerson's Mexicoco
Silver	Fork Brewing	Divine Brown
Silver	Garage Project	Cherry Bomb
Silver	Garage Project	La Calavera Catrina
Silver	Good George Brewing	Good George BlueBerry Gose
Silver	Kereru Brewing Company	For Great Justice Coconut Porter
Bronze	8 Wired Brewing	Flat White
Bronze	Behemoth Brewing Company	Brave Bikkie Brown Ale
Bronze	Black Dog	Brewtus
Bronze	Boston Beer Company	Samuel Adams Porch Rocker
Bronze	Boston Beer Company	Samuel Adams Toasted Caramel Bock
Bronze	Boston Beer Company	Samuel Adams Bonfire Blonde
Bronze	Boston Beer Company	Samuel Adams Summer Ale
Bronze	Brew Moon Brewing Company	Ole Mole
Bronze	DB Breweries	DB Export Citrus Lime and Ginger
Bronze	Emerson's Brewing Co.	Emerson's Taieri George
Bronze	Garage Project	Rose de la Vallee
Bronze	Kereru Brewing Company	Black Ruby Imperial Stout
Bronze	McLeod's Brewery	Hot Curl
Bronze	Moa Brewing Company	Moa Smoked Helles
Bronze	Te Aro Brewing Company	Te Aro Grapefruit IIPA
Bronze	Tuatara Brewing Co.	Wild Pumpkin Ale
Bronze	Valkyrie Brewing	Valkyrie Gudrun
Bronze	Wigram Brewing Co. Ltd.	Harvard Honey Ale



Specialty, Experimental, Aged, Barrel, Wood-Aged



Sponsored by Plant & Food Research

Trophy	Croucher Brewing	Lowrider
Gold	Croucher Brewing	Lowrider
Gold	8 Wired Brewing	Wild Feijoa 2015
Gold	Baylands Brewery	350 SPA
Gold	Black Dog	Double Barrel
Gold	Boston Beer Company	Samuel Adams Kosmic Mother Funk
Gold	Lion	Mac's Mid Vicious
Gold	Renaissance Brewing Ltd.	Empathy
Silver	8 Wired Brewing	Sour Side of the Moon
Silver	Bach Brewing	Crayporter Crayfish Porter
Silver	Craftwork Brewery	Bruxelles ma Belle
Silver	Deep Creek Brewing Company	Neptune
Silver	Eddyline Brewery & Pizzeria	Low-Tide Pale Ale
Silver	Emerson's Brewing Co.	Emerson's Whiskey Porter
Silver	Emerson's Brewing Co.	Emerson's Citra SMAsh
Silver	Emerson's Brewing Co.	Emerson's Southern Clam Stout
Silver	Fork Brewing	The Upside Down
Silver	Garage Project	Wabi Sabi Sour
Silver	Garage Project	Umami Monster
Silver	Garage Project	Lola
Silver	Martinborough Brewery	A Wee Scotch Porter
Silver	Panhead Custom Ales	Grease Monkey
Silver	Renaissance Brewing Ltd.	Oak aged Stonecutter
Silver	Townshend Brewery	Wynnes Fall
Bronze	Bach Brewing	Breakabay Sparkling Cream Ale
Bronze	Behemoth Brewing Company	Beached As - Tropical IPA
Bronze	Boston Beer Company	Samuel Adams Utopias 2015
Bronze	Brew Moon Brewing Company	Other Side of the Moon
Bronze	Choice Bros	Holden
Bronze	Emerson's Brewing Co.	Emerson's Usurper
Bronze	Fork Brewing	Skywalker
Bronze	Fork Brewing	Simcode
Bronze	Garage Project	White Mischief
Bronze	Harrington's Breweries	Harringtons IPA
Bronze	Harrington's Breweries	Sobering Thought
Bronze	Hawkes Bay Brewing Co.	APA
Bronze	Lion	Steinlager Mid
Bronze	McLeod's Brewery	Black Watch



Specialty, Experimental, Aged, Barrel, Wood-Aged



Sponsored by Plant & Food Research

Bronze	mike's Brewery	mike's Hopstock & 2 Smoking Barrels
Bronze	Moa Brewing Company	Moa Tripel Sauvignon 2015
Bronze	Moa Brewing Company	Moa Imperial Stout
Bronze	Panhead Custom Ales	Hardtail Henry
Bronze	Sprig & Fern Brewery	Wai-iti Lager
Bronze	Sunshine Brewery Ltd.	Barrel Aged Pumpkin Ale
Bronze	Te Aro Brewing Company	Boysen da Wood
Bronze	Te Aro Brewing Company	Uncle Tom's Bourbon Barrel Aged Imperial Stout
Bronze	The Sawmill Brewery	Sawmill Session IPA
Bronze	The Sawmill Brewery	Sawmill 12 Gauge
Bronze	Three Boys Brewery	Three Boys LOCAL Session IPA
Bronze	Tuatara Brewing Co.	XV
Bronze	Wigram Brewing Co. Ltd.	Spruce Beer



Cider or Perry

Sponsored by Convention Management NZ



Trophy	Zeffer Cider Co.	Cidre Demi-Sec
Gold	Zeffer Cider Co.	Cidre Demi-Sec
Gold	West End	5 Seed Crisp Apple Cider
Silver	Angry Orchard Cider Company	Angry Orchard Stone Dry
Silver	DB Breweries	Monteith's Lightly Crushed Cider
Silver	DB Breweries	Old Mout Pear Scrumpy
Silver	Harvest Cidery	Scrumpy Apple
Silver	Zeffer Cider Co.	Crisp Apple Cider
Bronze	Angry Orchard Cider Company	Angry Orchard Crisp Apple
Bronze	Bach Brewing	Ocean Breeze Pressed Apple Cider
Bronze	Cassels and Sons Brewery	Cider
Bronze	DB Breweries	Old Mout Hard cider
Bronze	DB Breweries	Old Mout Scrumpy
Bronze	DB Breweries	Monteith's Crushed Pear Cider
Bronze	Edgebrook Cider	Edgebrook 'Village' Cider
Bronze	Forbidden Cider Co.	Simply Apple Cider
Bronze	Harvest Cidery	Harvest Apple Cider
Bronze	Hawkes Bay Brewing Co.	Kingston Original Cider
Bronze	Lion	Isaac's Cider
Bronze	Moa Brewing Company	Moa Cider
Bronze	Three Wise Birds	Bach Life
Bronze	West End	Kirin Fuji Apple Cider
Bronze	West End	James Squire Orchard Crush Apple Cider
Bronze	Zeffer Cider Co.	Slack Ma Girdle
Bronze	Zeffer Cider Co.	Methodo Cider



Fruit or Flavoured Cider or Perry



Sponsored by Label & Litho

Trophy	Zeffer Cider Co.	Apple Crumble Cider
Gold	Zeffer Cider Co.	Apple Crumble Cider
Gold	Three Wise Birds	Moulin Rouge
Silver	Angry Orchard Cider Company	Angry Orchard Knotty Pear
Silver	Forbidden Cider Co.	Perry Bomb
Silver	G.LaBs	Black Betty Cider
Silver	Good George Brewing	Good George Drop Hop Cider
Silver	Two Thumb Brewing Co. Ltd.	Scoundrels & Rogues: Evil Genius
		Imperial Cider
Bronze	Black Dog	Five Finger Tree
Bronze	DB Breweries	Orchard Thieves Cider with Peach & Passionfruit
		Lucifer's Revenge
Bronze	Forbidden Cider Co.	Doris Plum Cider
Bronze	Good George Brewing	Harvest Apple with Boysenberry
Bronze	Harvest Cidery	Berry Cider
Bronze	Sprig & Fern Brewery	



Packaging

Sponsored by Massey University



Trophy	Moa Brewing Company	Moa NZ Gold Ale 375ml Retail Unit (Bottle/Cork/Muselet/Label)
Gold	Moa Brewing Company	Moa NZ Gold Ale 375ml Retail Unit (Bottle/Cork/Muselet/Label)
Gold	Bach Brewing	Bach Range
Gold	Good George Brewing	Good George Squealer Range
Gold	Tuatara Brewing Co.	Wilder Brew
Silver	Behemoth Brewing Company	Tasty Beverage and Hopped up on Pils (Rip Lid Cans)
Silver	Good George Brewing	Rocket Coffee IPA
Silver	Good George Brewing	Squealer Carry Case
Bronze	Good George Brewing	Squealer 8 Pack Carton
Bronze	Good George Brewing	Rocky Rd Black and Rocky Rd White Stout
Bronze	Moa Brewing Company	Moa Session Pale Ale Cans Retail Unit (Outer Plus Cans)
Bronze	Outlier Cartel	Honey Chestnut



Morton Coutts Trophy

Sponsored by DB Breweries

Awarded to: John Harrington



Brewers Guild of New Zealand Beer Writer of the Year

Sponsored by Brewers Guild of New Zealand

Awarded to: Michael Donaldson



*of the Province
of Canterbury
We the Members
and Ratepayers
and do as you
respectfully to
the occupation
of Hagley Park
Market.*

*We consider
the removal of the
from its original
be a public wrong
Cattle Market
City Council
the most injurious
that could be ima-
get apart for
Your Petitioners
pray that no legal
be given to such a
And your Peti-
tioners
pray*

NORTH ISLAND
NEW ZEALAND
SHOWING
PRINCIPAL TOURIST RESORTS



BREWERS GUILD OF NEW ZEALAND AWARDS



HONOURS

*March 1868
No. 175
Members
Council*



*is substituted
Christened
interests by
against*





Honorary Fellow

Awarded to: Dave Logsdon



Honorary Member

Awarded to: John Harrington



Life Membership

Awarded to: Simon Taylor



Industry Achievement Award

Awarded to: Doug Donelan



President's Award

Awarded to: Phillipa Boa



*of the ...
of ...
We the ...
And Rate ...
and the ...
respectfully ...
the ...
of the ...
Market ...
We ...
from its ...
be a ...
Cattle ...
City ...
the ...
that ...
set ...
Your ...
pray ...
be ...
And ...*

NORTH ISLAND
NEW ZEALAND
SINCE 1902
PRINCIPAL TOURIST RESORTS

BREWERS
GUILD OF NEW ZEALAND
AWARDS



AWARDS SUMMARY

*March 1868
No. 175
Members
Council
is ...
Christchurch
against*





AWARDS SUMMARY

The stature of the Brewers Guild of New Zealand Beer Awards continues to grow. From 858 entries last year to a record 946 entries this year. Judging was again held in Christchurch last weekend with 24 judges and 6 trainee judges assembling for 3 days to assess each beer on its merits, admirably supported by a team of Stewards, which included a group of staff and students from the Massey University Food Technology Department. This is the 7th year the Brewers Guild has partnered with Massey University. One of our past Massey stewards has recently gained full time employment within the brewing industry so it's great to see that this relationship is starting to bear fruit and goes to show how beneficial this has been for both the industry and Massey as well. I wish to thank the Massey team for their dedication and enthusiasm they showed.

A total of 42 Gold Medals, 145 Silver and 254 Bronze were awarded against the following criteria:

Beer Judging Award Criteria



Gold Medal

A world class beer that accurately exemplifies the style, or may vary slightly from style parameters, while displaying the proper balance of taste, aroma and appearance.



Silver Medal

An excellent beer that may vary from style parameters while maintaining close adherence to the style and displaying excellent taste, aroma and appearance.



Bronze Medal

A fine example that may vary from style parameters and have minor deviations in taste, aroma or appearance.

This represents a figure of 46% of all entries receiving a medal down from 53% last year. Feedback from judges on this percentage drop showed a few common themes:

- Entrants not understanding the requirement for brewers notes when entering. For example, it is very difficult to judge a beer in specialty classes when no base style is given.
- A lack of freshness / packaging faults
- Beers entered in to the wrong class.
- Underwhelming aroma
- A lack of malt structure



AWARDS SUMMARY

I believe this last point is particularly important and would challenge breweries to concentrate their efforts on the malt characteristics of their beers – not just the hops and additives.

I would like to thank the hardworking team of judges and each and every steward for their efforts and assistance with this year's competition and also the BEERNZ, staff both past and present who not only hugely assist in these awards but also have their daily work significantly interrupted for a period when 'awards time' takes over.

Thanks also to all 2016 sponsors for their support of these awards.

Craig Bowen
Competition Manager

2016
BREWERS
GUILD OF NEW ZEALAND
AWARDS



PANEL OF JUDGES



ORGANISER/BREWERS GUILD LIAISON Craig Bowen (NZ)

HEAD STEWARD Helen Matthews (NZ)

JUDGES

Ian Kingham
Tina Panoutsos
Sam Fuss
Wilson Hede
Ralph Bungard)
Tracy Banner
Dave Nicholls
Kelly Ryan
Colin Mallon
Soren Erikson
Wendy Roigard
Geoff Griggs
Jody Scott
Alex Biederman
Laura Smith
Caleb DeFrees
Matt Warner
Sam White
Jason Bathgate
Michael Donaldson
Mark Goldman
Steve Whitehead
Rob Marshall
Eli Haines

TRAINEE JUDGES

Anita Mitchell
Aiden Styles
Shiggy Takagi
Cam Burgess
Niels Schipper
Andrew Childs

NORTH ISLAND
NEW ZEALAND
PRINCIPAL TOURIST RESORTS

STEWARDS

- Heather McClean
- Hillary Tuason
- Rebecca Tresidder
- Yvette Coyle
- Sara Brough
- Morgan Christy-Jones
- Jono Clark
- Michael Paul
- Hal Treves
- Donald Meikle-Cameron
- Sharon Gaynor
- Ned Bartlett
- Caitlin Brown
- Benjamin Bowen
- Jonty Kay
- Cameron Nielson
- Kelly Ockwell
- Charles Swettenham

PACKAGING JUDGES

- Craig Crawford
- James Smith
- Ian Kingham

BEER WRITER JUDGES

- Andrew Lumsden / Te Radar
- Lisa Morton
- Patrick Gower
- Jono Galuszka (2015 Winner)

MORTON COUTTS PANEL

- Martin Craig
- Sven Hooper
- Darren Allchurch

BREWERS GUILD OF NEW ZEALAND AWARDS



SPONSORS



The Brewers Guild of New Zealand would like to thank all of our 2016 sponsors



MAJOR SPONSORS



TROPHY AND SEMINAR SPONSORS



MERCHANDISE SPONSOR



WWW.BREWERSGUILD.ORG.NZ